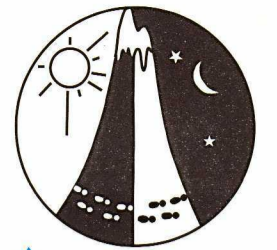
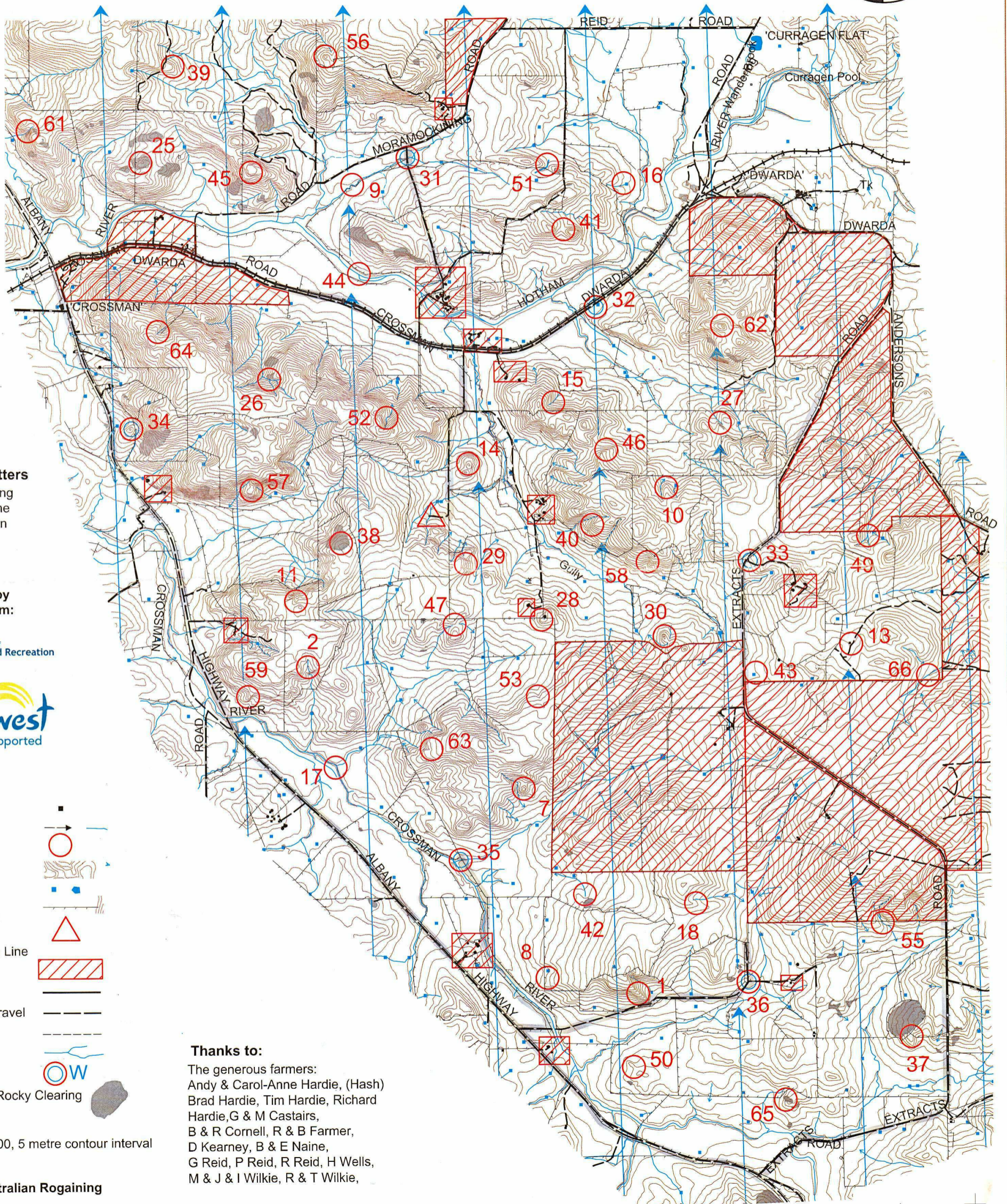


Instant Rogaine (just add walkers)



Upside down WARA Rogaine 23rd and 24th of Feb 2008



Setters / Veters

Vince Harding
Geoff Hearne
Frank Cotton
Bill Baxter

Supported by Funding from:



LEGEND

- Building
- Continuations
- Control
- Contours
- Dam
- Fence
- Hash House
- Magnetic North Line
- Out of Bounds
- Road, Sealed
- Road, Major Gravel
- Track
- Watercourse
- Water Drop
- Rock Surface/Rocky Clearing

SCALE 1:50,000, 5 metre contour interval

Thanks to:

The generous farmers:
Andy & Carol-Anne Hardie, (Hash)
Brad Hardie, Tim Hardie, Richard
Hardie, G & M Castairs,
B & R Cornell, R & B Farmer,
D Kearney, B & E Naine,
G Reid, P Reid, R Reid, H Wells,
M & J & I Wilkie, R & T Wilkie,

Western Australian Rogaining
Association,
PO Box 1201,
Subiaco, WA, 6904

This map was produced using OCAD 9.3.2 by the Western Australian Rogaining Association, wa.rogaine.asn.au.
Data supplied by DOLA and used under copy licence 393/93. Possession of this map does not give right of entry to this area.

